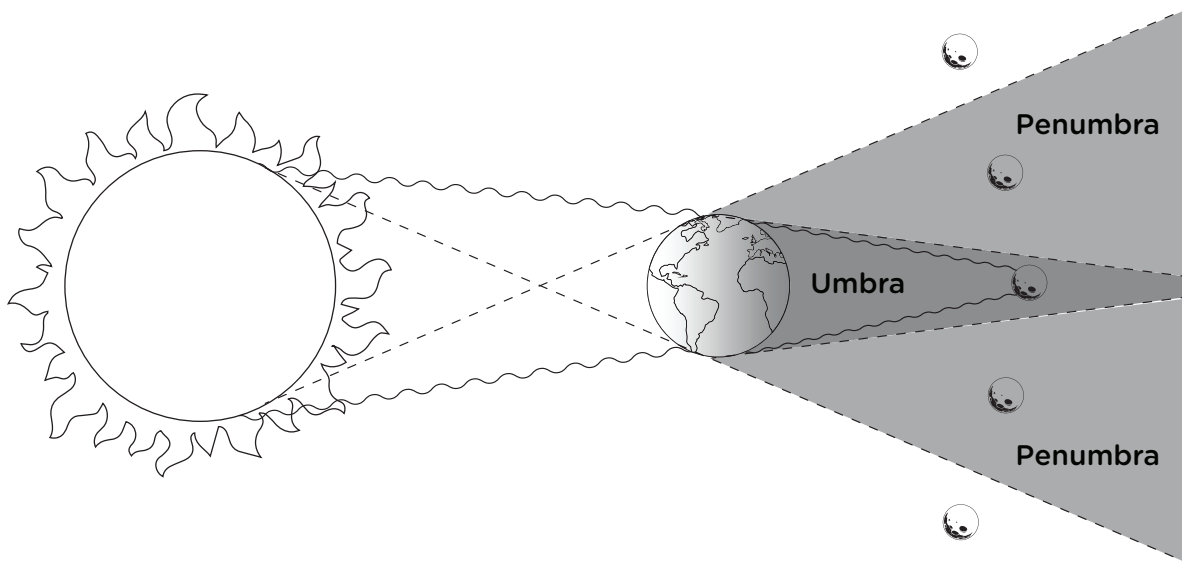




# LUNAR ECLIPSES ACCORDING TO TOM



Tom is a well-known character at the COSMODOME. If you have ever visited us with your school, you may know that he lives on the Moon! He offers you here to understand the lunar eclipses thanks to this DIY.



## WHAT IS A MOON ECLIPSE?

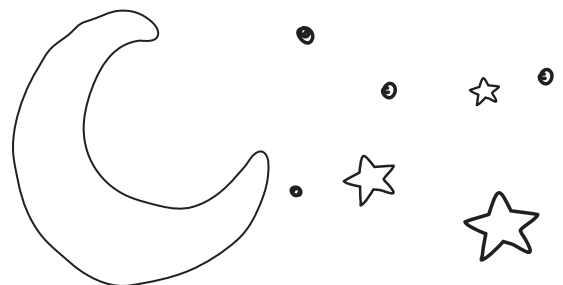
Lunar eclipses always occur during the full moon, since at this time the Sun, Earth and Moon are aligned. The Earth therefore finds itself between the Sun and the Moon. Result: our natural satellite enters the shadow cast by the Earth and we see it darken. During a lunar eclipse, it is the shadow of the Earth that we observe on the Moon!

If the Sun, Earth and Moon are perfectly aligned, then we can witness a total eclipse. If the Moon is in the so-called "penumbra" zone, it will be a partial eclipse. When the Moon is full, but there is no eclipse, it is because the latter passes too low or too high of the shadow projected by the Earth.



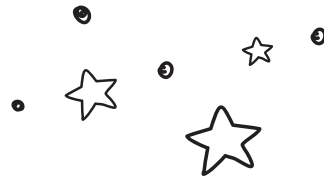
### GOOD TO KNOW!

Lunar eclipses are much more frequent than solar eclipses and there is no danger in viewing them with the naked eye.





# MAKE YOUR OWN MOON ECLIPSE MODEL



Color, then cut on the dotted lines the Moon, the Earth, the Sun and the two rectangles. Glue the Sun to the glue point of the large rectangle and use 2 brads to attach the Earth and the Moon.

